

# Bongu tfal!

Araw naqra x'naghmel

DEJJEM,

TA' SPISS,

XI KULTANT,

RARI u

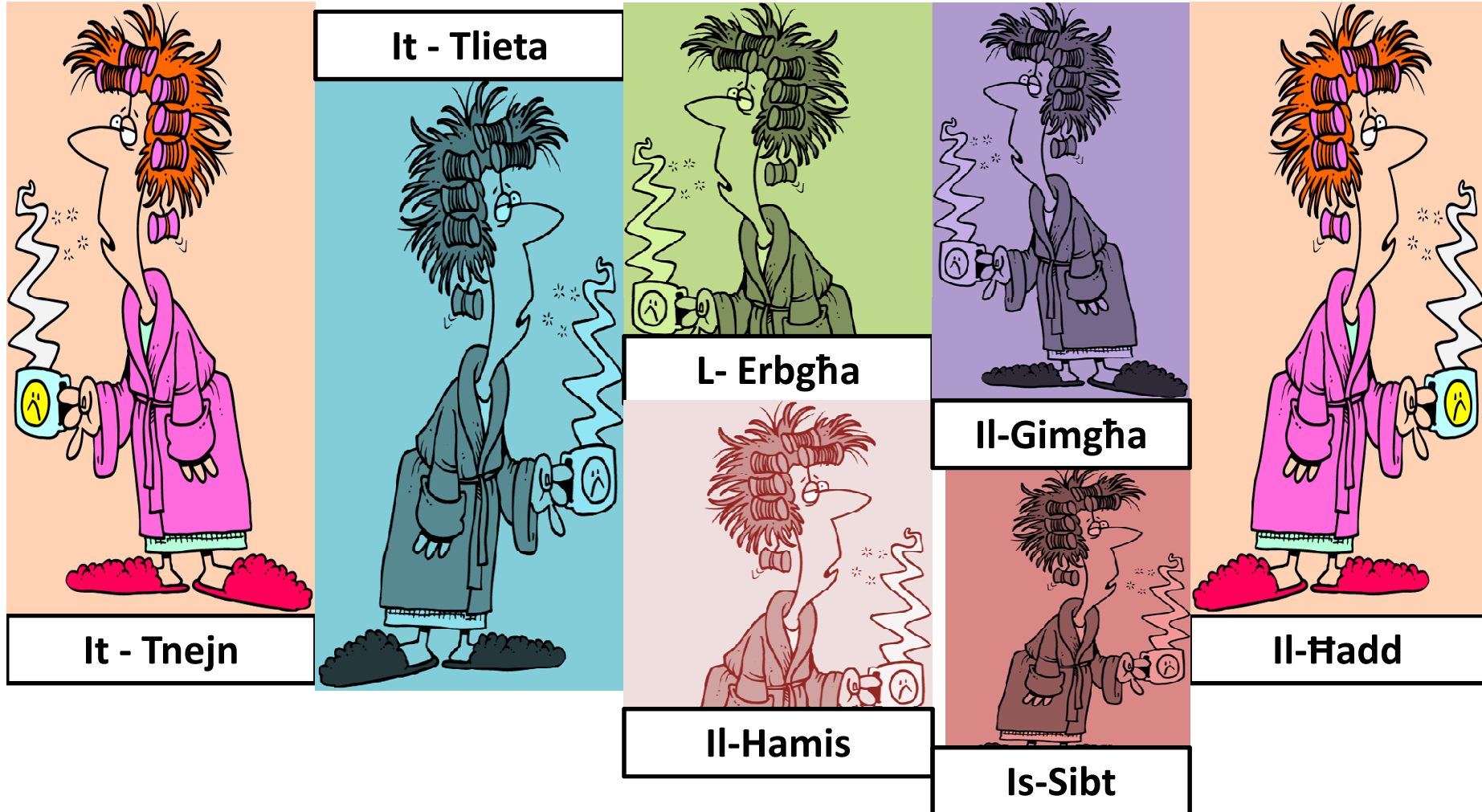
QATT!



Prepared by Ms Claire Ciantar

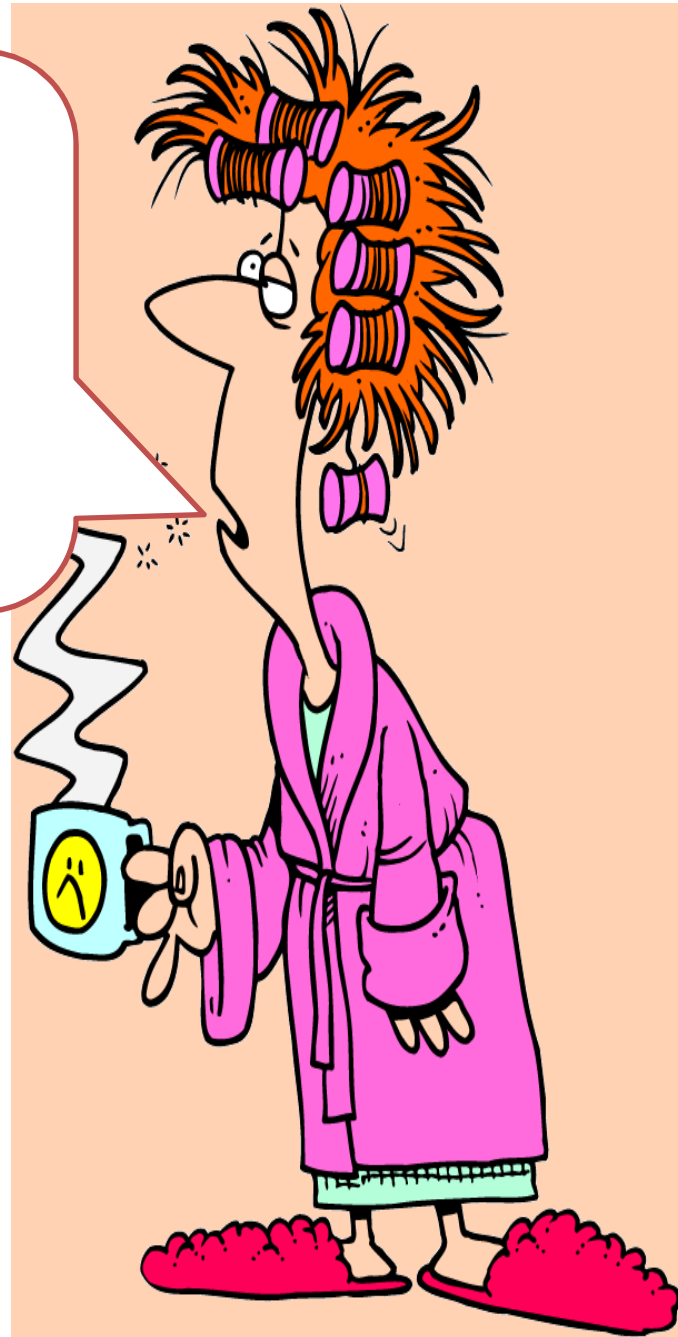


# Filgħodu, jiena DEJJEM nieħu kikkra kafe’.

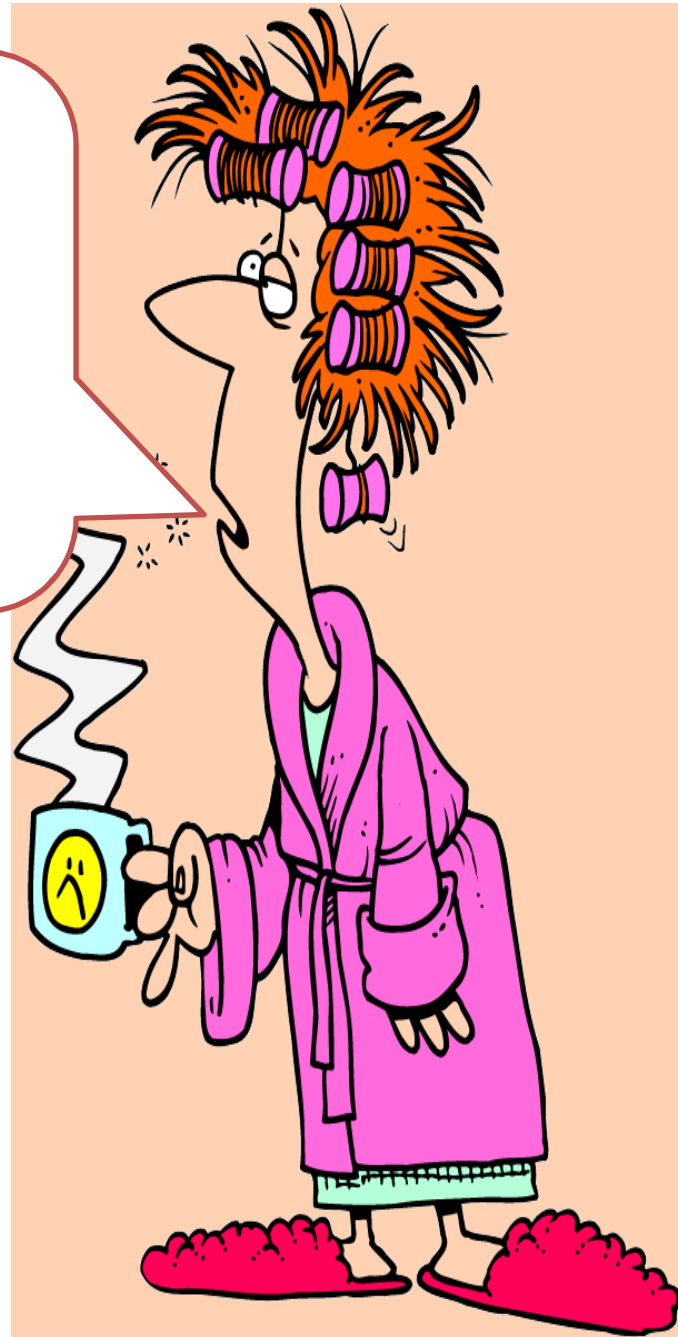


**FILGHODU, JIENA**

-----  
**NIEHU KIKKRA KAFE'!**  
**KULJUM!**



**FILGĦODU, JIENA  
DEJJEM  
NIEĦU KIKKRA KAFE'!  
KULJUM!**



# TA' SPISS, immur għand ommi biex inkellimha u nagħtiha xi affarijiet.

- Kwazi kuljum



It - Tnejn



L- Erbgħa



Il-Ġimgħa



**IMMUR GĦAND OMMI  
BIEX INKELLIMHA W  
NAGĦTIHA XI  
AFFARIJET,**

**--- ----!**

**KWAŹI KULJUM!**

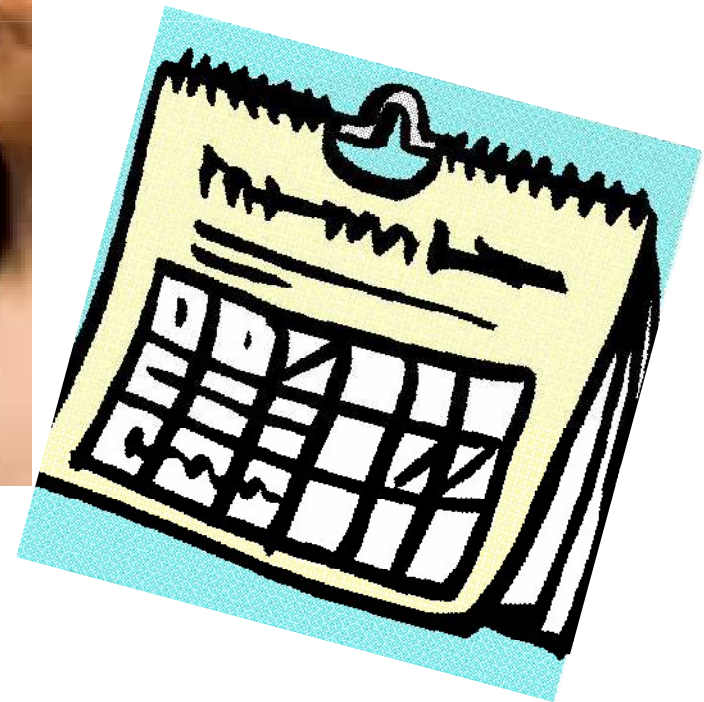




**IMMUR GĦAND OMMI  
BIEX INKELLIMHA W  
NAGĦTIHA XI  
AFFARIJET,  
TA' SPISS!**

**KWAŹI KULJUM!**

# XI KULTANT niltaqa' mal-ħabiba tiegħi.







**KIF INTI?  
ILNA FTIT MA  
NILTAQGĦU.  
IMISSNA  
NIFTEHMU  
IKTAR TA'  
SPISS...IMMA  
DIFFIĊLI!**





**VERU, VERU!  
NILTAQGĦU  
BISS DARBA  
FIX-XAHAR!**

**AĦJAR MIX-  
XEJN!**



A photograph of two women smiling and holding coffee cups. The woman on the left is wearing a blue top and holding a white coffee cup. The woman on the right is wearing a dark top and holding a blue coffee cup. A speech bubble with a blue border is positioned in the center, containing text in a stylized font. The background is a blurred outdoor setting with a fence and buildings.

**G#ALL-  
INQAS  
NILTAQG#U**

==

-----!

A photograph of two women smiling and holding coffee cups. The woman on the left is wearing a blue top and holding a white coffee cup. The woman on the right is wearing a dark top and holding a blue coffee cup. A speech bubble with a blue border is positioned in the center, containing the text 'GHALL- INQAS NILTAQGĦU XI KULTANT !'.

**GHALL-  
INQAS  
NILTAQGĦU  
XI  
KULTANT !**

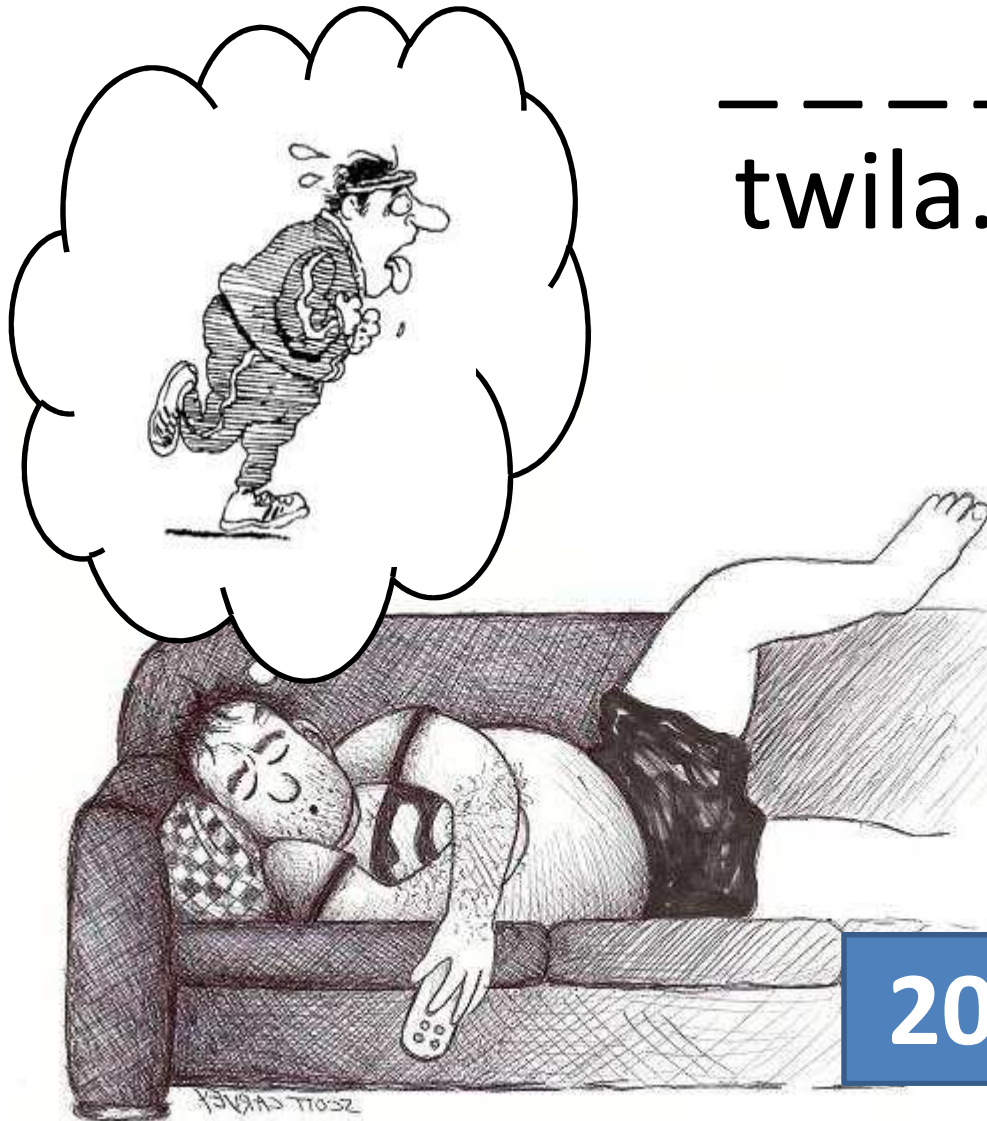
# RARI mmur mixja twila.

- Darba f'mitt qamar



2009

\_\_\_\_\_ jmur mixja  
twila. Kwazi qatt!



2010





\_\_\_\_\_ jmur mixja  
twila. Kwazi qatt!



RARI jmur mixja twila.  
Kwazi qatt!



QATT ma mmur il-baħar fix-xitwa.





Mela le! X'bard! Žgur li LEEEE!



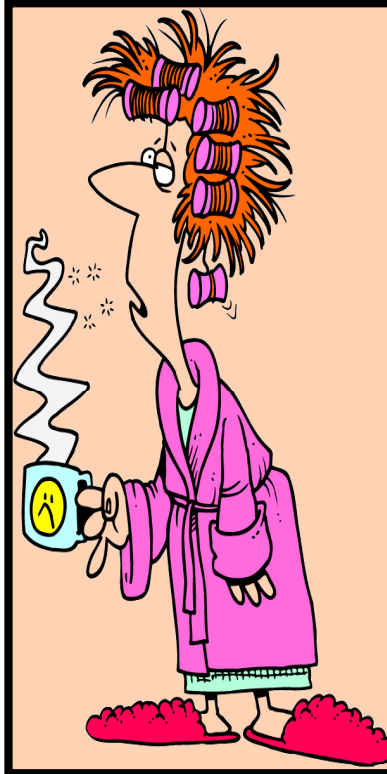


---  
**MA MMUR**  
**IL-BAĦAR**  
**FIX - XITWA!**



**QATT  
MA MMUR  
IL-BAĦAR  
FIX - XITWA!**

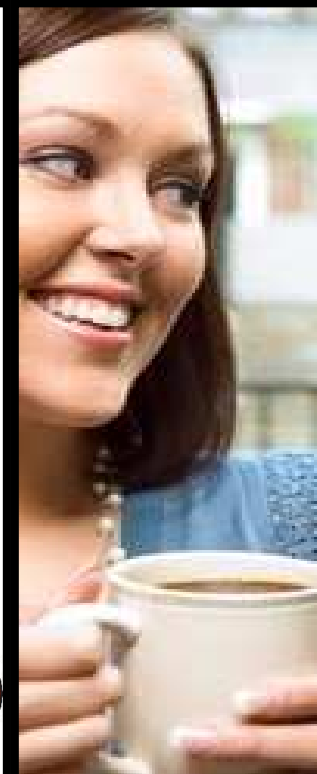




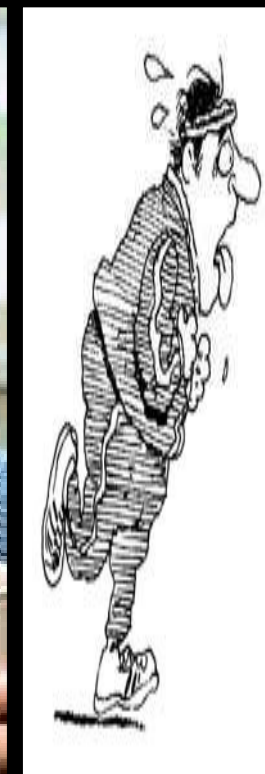
**DEJEM**



**TA' SPISS**



**XI  
KULTANT**



**RARI**



**QATT**